



**PeninsulaSteel**

HELPING BUILD STRONGER COMMUNITIES

CATALOG  
CONSTRUCTION AND CONCRETE PRODUCTS

Peninsula Steel is an American company focused on the value-added processing of steel products for the construction industry. We are fully committed to helping our partners in the construction industry achieve superior results. Peninsula Steel uses the very latest technology and manufacturing techniques in order to produce quality products while exceeding the highest safety standards.

Peninsula Steel provides services to our distributors in the construction building industry by maintaining alliances with suppliers of recognized prestige both domestically and internationally. These alliances allow Peninsula Steel to maintain optimum inventory levels and highly competitive prices for both Peninsula Steel products as well as private labeled products to quickly service the needs of our customers.

Peninsula Steel is committed to a sustainable strategy of growth that mutually benefits our customers and our employees. We support the environment and the surrounding communities in which we operate. At Peninsula Steel, we believe nurturing a work ethic that fosters honesty and loyalty in an environment of teamwork and positive attitude, results in greater productivity and superior customer service.

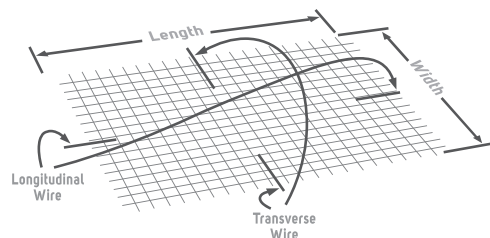
**We hope you will try the Peninsula Steel difference!**



# 01 Welded Wire Reinforcement

	Item Code	Description	Spacing	Width/Length	Units per Bundle	Bundles per Truckload	Units per Truckload
Sheets	S44820	D4.0 x D4.0 (4 GA.)	4x4	8' X 20'	25	15	375
	S46820	D2.9 x D2.9 (6 GA.)			25	20	500
	S65820	D5.0 x D5.0 (2.5 GA.)	6x6		25	17	425
	S64820	D4.0 x D4.0 (4 GA.)			50	11	550
	S66820	D2.9 x D2.9 (6 GA.)			50	15	750
	S68820	D2.1 x D2.1 (8 GA.)			50	21	1050
	S610820	D1.4 x D1.4 (10 GA.)	8' X 12.5'	50	28	1400	
	S6108125	D1.4 x D1.4 (10 GA.)		100	2100	21	
	S648125	D4.0 x D4.0 (4 GA.)	6x6	8' X 15'	50	900	18
	S688125	D2.1 x D2.1 (8 GA.)			100	1600	16
	S66815	D2.9 x D2.9 (6 GA.)		50	20	1000	
	S68815	D2.1 x D2.1 (8 GA.)		50	28	1400	
S610815	D1.4 x D1.4 (10 GA.)	100		21	2100		
Rolls	R665150	D2.9 x D2.9 (6 GA.)		6x6	5' X 150'	11 and 7	9 and 9
	R6105150	D1.4 x D1.4 (10 GA.)	18			18	324
	R6105200	D1.4 x D1.4 (10 GA.)	14		18	252	
	R6106150	D1.4 x D1.4 (10 GA.)	17		16	272	

Other sizes may be available upon request.



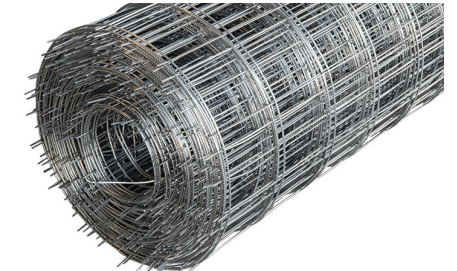
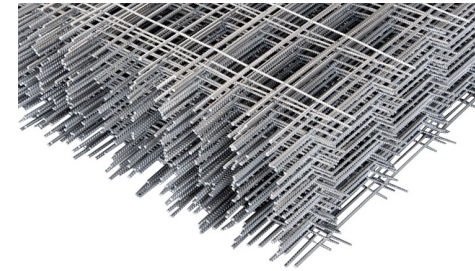
Industry Method for Designating Style:

Example: **6x6-D2.9xD2.9**



WELDED WIRE MESH IS USED IN THE CONSTRUCTION INDUSTRY WITH A WIDE RANGE OF APPLICATIONS IN DIFFERENT TYPES OF BUILDING PROJECTS, AS WELL AS IN FOUNDATIONS AND REINFORCEMENT FOR LIGHT AND HEAVY TRAFFIC ROADWAYS.

THE PRIMARY USE OF WELDED WIRE REINFORCEMENT IS TO REINFORCE CONCRETE. DUE TO DRYING SHRINKAGE, TEMPERATURE CHANGES, AND WEAK SUBGRADES. CONCRETE TENDS TO CRACK. WELDED WIRE REINFORCEMENT ALONG WITH AGGREGATE HELPS TO MAINTAIN THE CONCRETE SLAB IN ONE UNIT. WELDED WIRE REINFORCEMENT PRODUCED BY PENINSULA STEEL MEETS ASTM A-1064 SPECIFICATIONS.



# 02 Bar Supports

BAR SUPPORT FOR REBAR AND WIRE MESH.

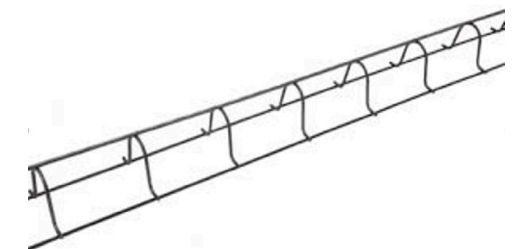
## Slab Bolster Upper

Item Code	Description	Base Unit	Pieces p/Pallet
SBU2	2' x 5'	piece	1000
SBU212	2-1/2' x 5'	piece	
SBU3	3' x 5'	piece	800
SBU312	3-1/2' x 5'	piece	
SBU4	4' x 5'	piece	600
SBU5	5' x 5'	piece	
SBU6	6' x 5'	piece	

Used to support one layer of steel above another, and space them to required distance. May also be used to support steel on soft material for surface, such as carton forms, or fill material.

Individual pallet quantities can also be ordered and shipped LTL or added to a mixed truckload of other products.

Other sizes may be available upon request.



## 03 Nails

### - Duplex

16D	3"
-----	----

48 boxes per pallet.

### - Common Nails

8D	2 1/2"
16D	3 1/2"



## 04 Concrete Accessories

### - Black Annealed Wire

Applied for home and construction.

Stock sizes include:

9 ga 100 lb. coils

16 ga 100 lb. coils

12 ga 100 lb coils

11 ga 100 lb coils

Other gauges are available upon request



100 lb Coil

Before concrete is poured, tie wire is used to secure rebar or mesh in place or fasten rebar together

### - Black Annealed Tie Wire



3.5 Lb Rolls

Used to secure wire mesh or rebar in place.

### - Pencil Rod in Coils



Package Length: 20"  
Diameter: 31.5"  
Weight per Roll: 100 lbs  
Length per roll: 60 ft  
Weight per Bundle: 500 lbs

### - Pencil Rod



Pencil Rod is available in smooth or deformed. 1/4" x 20' is our stock size. Other diameters and lengths are available upon request.

1 ton bundles

### - Smooth Dowel



Are used in concrete to allow expansion and contraction of concrete which occurs when weather and moisture changes exist, but keeps the concrete from lifting.

1/2" X 18"  
1/2" X 24"

3/8" X 18"  
Other sizes may be available upon request.

## Rebar Stirrups

Material	Description
CRS3186	3/8 3X18' x 6'
CRS3187	3/8 3X18' x 7'
CRS3188	3/8 3X18' x 8'
CRS3248	3/8 3X24' x8'
CRS3308	3/8 3X30' x8'
ORS3126	3/8 3X12' x6'
ORS3127	3/8 3X12' x 7'
ORS3136	3/8 3X13' x 6'
ORS3157	3/8 3X15' x7'
ORS3176	3/8 3X17' x 6'
ORS3186	3/8 3X18' x 6'
ORS3187	3/8 3X18' x 7'
ORS3246	3/8 3X24' x 6'
ORS32247	3/8 3X24' x 7'
ORS3306	3/8 3X30' x 6'

Rebar Stirrups are used in concrete beams and columns to hold the main longitudinal rebar in place. They are available in both "open" or "closed" configurations in various dimensions.



Other sizes may be available upon request.

## 05 Carbon Steel Wire

Industrial wires manufactured from carbon steel rod, Bright basic wire is a finished product meeting the desired thickness or size, we develop this product by using the most high-quality rod in the market, this product is re-stretched through a drawing process using the most advanced technology.

We ensure all products are being qualified and inspected by specialized personnel, this helps us guarantee the gauge size and mechanical properties as well as manufacturing standards that our customers need.



**All our Bright basic wires can be classified into the following:**

- Low Carbon Steel Bright Wire 1004-1010.
- Low Carbon Steel Wire 1004-1010.
- Low Carbon Steel Industrial Quality Wire 1004-1010.
- Medium Carbon Steel Wire 1018-1022.

**Product Presentation:**

- Small Rolls: 100-250 kg (220 – 551 lbs.)
- Coiler: 800-1200 kg. (1750 -2200 lbs.)
- Gauge from 0.500" (12.5 mm)- 0.062" (1.59mm) (16.0 ga)





**PeninsulaSteel**

HELPING BUILD STRONGER COMMUNITIES

To place an order, obtain a quote,  
or receive more information about  
our products and services,  
please contact us at:  
**+1 844 783 0373** or  
**sales@peninsulasteel.com**

#### **MANUFACTURE & DISTRIBUTION FACILITIES**

- **FLORIDA:**  
4504 Sydney Road  
Plant City, FL 33566
- **TEXAS:**  
4119 Free Trade Street Suite A  
International Trade Center Industrial Park  
Laredo, TX 78045
- **OUTSIDE OF THE US:**  
001 956 795 1966

**[www.peninsulasteel.com](http://www.peninsulasteel.com)**